



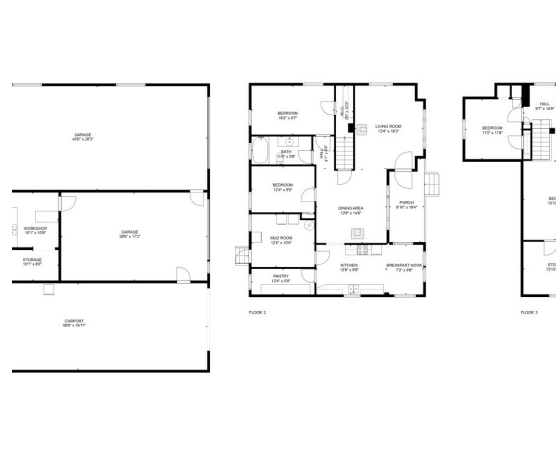
FOR SALE
24517 SE 448th St, Enumclaw, WA, 98022

Sandi Kleist

253-332-2342

sandikleist@bhhsnwrealestate.com

Learn more about this property by visiting <https://vu.exposiohdr.com/24517-se-448th-st-enumclaw-wa-98022-1807311>



TOTAL: 1747 sq. ft.
FLOOR 1: 0 sq. ft., FLOOR 2: 1254 sq. ft., FLOOR 3: 493 sq. ft.
EXCLUDED AREAS: CARPORT: 856 sq. ft., GARAGE: 1363 sq. ft., WORKSHOP: 119 sq. ft., STORAGE: 336 sq. ft., PORCH: 97 sq. ft., LOW CEILING: 174 sq. ft.
FLOOR PLAN CREATED BY CIBOLA APP MANAGEMENT'S SKETCH NIGHT RELEASED BUT NOT GUARANTEED.